



Turion™ Auto-Guard™

Cylinder Connection Cover



FEATURES

- ◆ Protects gas technicians from harmful exposure
- ◆ Protects integrity of process gas and related equipment
- ◆ Recommended for all HPM or access restricted gases
- ◆ Automated operation supports safety and process equipment consistency
- ◆ Constructed of 302-series stainless steel, anodized 6061-T6 aluminum and corrosion-resistant Viton™ O-Rings
- ◆ Durability proven through extensive environmental and cycle tests

GAS OPERATIONS SAFETY

When properly installed and operated, the Auto-Guard™ connection cover enhances specialty gas operations by preventing accidental disconnection of a hazardous gas cylinder from a gas source manifold. An extended shroud clearly indicates that it is unsafe to attempt to disconnect a cylinder. A retracted shroud indicates the system is in safe state and allows the operator access for disconnection.

AUTOMATIC CONTROL

The extension and retraction of the connection cover shroud is performed by automatic purge controllers. This automated control ensures that the shroud is retracted only during the necessary steps in the cylinder change sequence.

FAIL-SAFE OPERATIONS

The Auto-Guard™ cover is connected to an automated controller that provides pneumatic signals to both open and close the device. Designed to be 100% pneumatically actuated, the device has no springs or mechanical components to fail. In the event of electrical failure or pneumatic pressure loss, the connection cover shroud remains in its position prior to the failure until power is restored and the computer confirms the manifold status.

TROUBLE-FREE INSTALLATIONS

The Auto-Guard™ connection cover can be installed on most standard cylinder connection pigtailed, usually without equipment modifications and with minimal downtime.



SEMI-GAS® supplies SEMI S2 certified, production-ready ultra high purity gas source systems, distribution systems and control technology to leaders in the Semiconductor industry and related high-tech fields. Built to address the most rigorous precision and purity demands of these specialized applications, SEMI-GAS® solutions are globally renowned for their premier levels of safety, quality, and performance.



ORDERING INFORMATION

Contact your SEMI-GAS® sales rep or visit www.semi-gas.com

BY APPLIED ENERGY SYSTEMS

180 Quaker Lane
Malvern, PA 19355

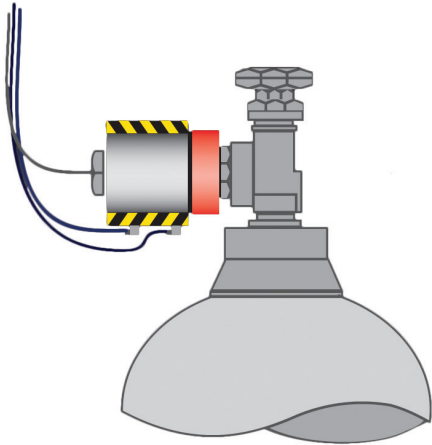
Phone: 610.647.8744

Fax: 610.640.4548

Email: sales@semi-gas.com

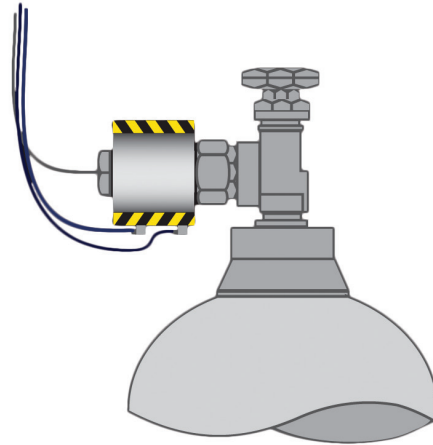
TURION-AUTO-GUARD-082016-V1

EXTENDED



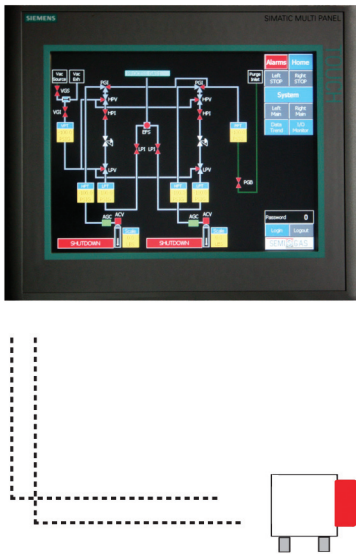
The Auto-Guard™ connection cover remains in the extended position when a manifold is online or any condition exists where it is unsafe for operators or equipment to open the cylinder connection fitting.

RETRACTED



The Auto-Guard™ Connection cover retracts into its housing, revealing the cylinder connection fitting for operator access after the controller determines the system conditions are safe. The Auto-Guard™ will remain in this position until the cylinder change and leak test have successfully been completed.

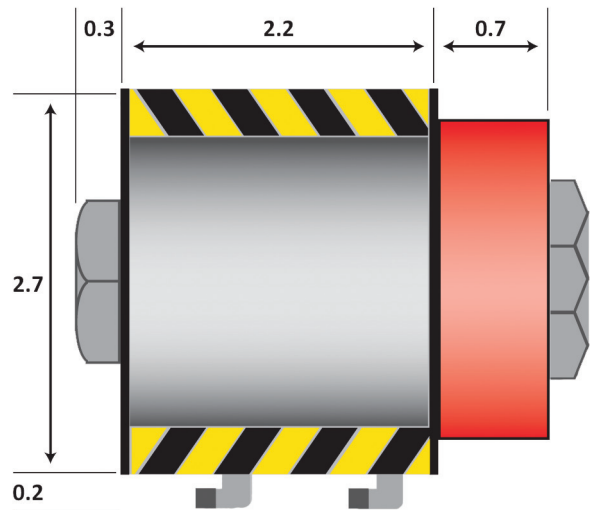
APPLICATIONS



SEMI-GAS® GIGAGUARD™ PLC

The Auto-Guard™ connection is a standard option for the GigaGuard™ PLC Controller.

DIMENSIONS



Note:
The Auto-Guard™ cylinder connection cover is designed for use on Parker and GasFlo CGA connections. Adaptability to other connections cannot be guaranteed.